

Heaven and Earth - Chant No. 1

"Similar to Nebo i Zem'la"

St. Michael's, Binghamton, NY

Traditional Plain Chant

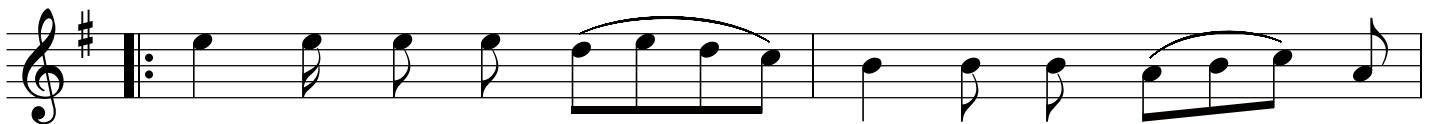


1a Hea - ven and earth,____ Hea - ven and earth,____
1b An - gels and peo - ple, An - gels and peo - ple,
2a Come and a - dore Him, Come and a - dore Him,
2b Ma - ry the Vir - gin, Ma - ry the Vir - gin,

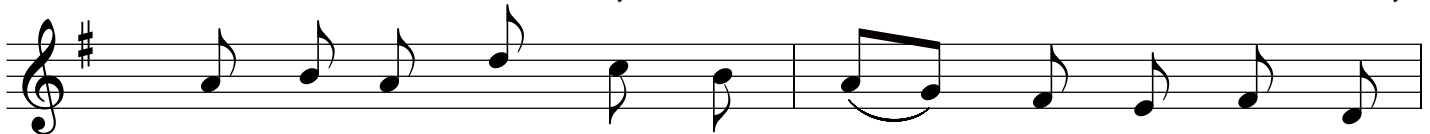


1a now sing____ in____ tri____ - umph.
1b Join in____ ce - le - bra____ - tion.
2a Ly - ing____ in a man____ - ger.
2b Keeps watch____ o'er the Sa____ - vior.

Refrain



Christ the Lord is Born,____ come and be - hold____ Him,



choirs of an - gels sing - ing, wise____ men ap - pear - ing,



Christ they are greet - ing, shep - herds are re - tell - ing,



joy - ful - ly the won - drous sto____ - ry.

Sing 1a and 1b then sing *refrain* 2 times.

Sing 2a and 2b then sing *refrain* 2 times.