

# Heaven and Earth - Chant No. 2

"Similar to Nebo i Zem'la"

St. Michael's, Binghamton, NY

Traditional Plain Chant



1a Hea - ven and earth,\_\_\_ Hea - ven and earth,\_\_\_  
1b An - gels and peo - ple, An - gels and peo - ple,  
2a Come and a - dore Him, Come and a - dore Him,  
2b Ma - ry the Vir - gin, Ma - ry the Vir - gin,

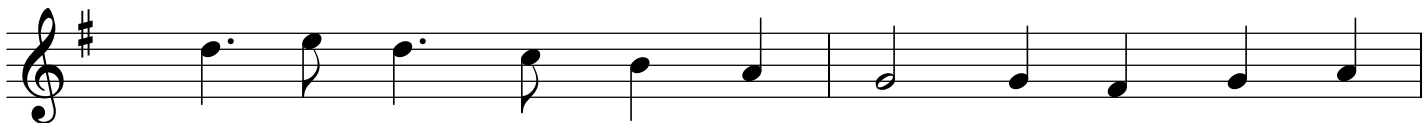


1a now sing\_\_\_ in\_\_\_ tri\_\_\_ - umph.  
1b Join in\_\_\_ ce - le - bra\_\_\_ - tion.  
2a Ly - ing\_\_\_ in a man\_\_\_ - ger.  
2b Keeps watch\_\_\_ o'er the Sa\_\_\_ - vior.

## Refrain



Christ the Lord is Born,\_\_\_ come and be - hold Him,



choirs of an - gels sing - ing, wise men ap - pear - ing,



Christ they are greet - ing, shep - herds are re - tell - ing,



joy - ful - ly the won - drous sto\_\_\_ - ry.

**Sing 1a and 1b then sing refrain 2 times.**  
**Sing 2a and 2b then sing refrain 2 times.**